






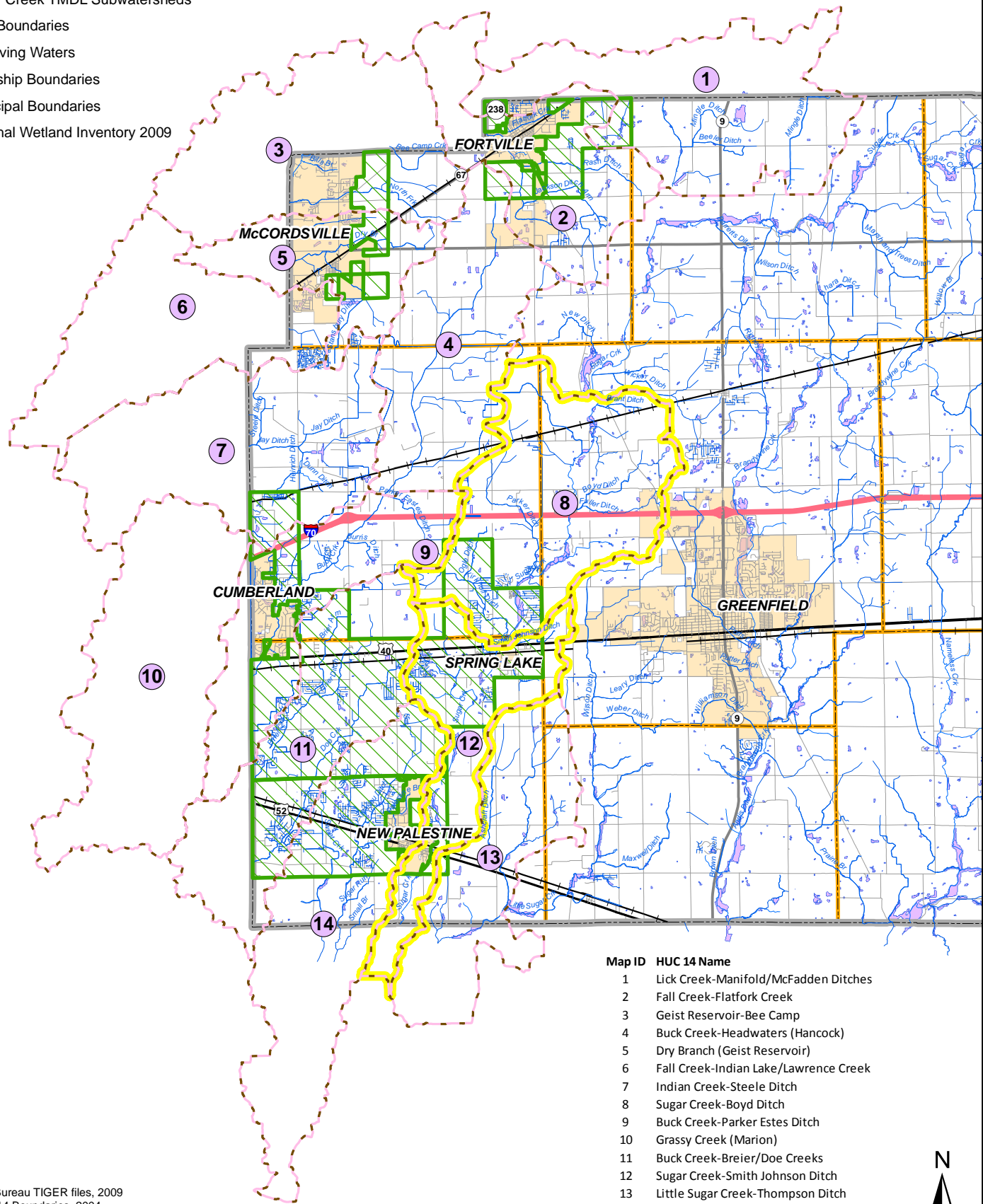



-  HUC 14 Boundaries
-  Sugar Creek TMDL Subwatersheds
-  MS4 Boundaries
-  Receiving Waters
-  Township Boundaries
-  Municipal Boundaries
-  National Wetland Inventory 2009



Map ID	HUC 14 Name
1	Lick Creek-Manifold/McFadden Ditches
2	Fall Creek-Flatfork Creek
3	Geist Reservoir-Bee Camp
4	Buck Creek-Headwaters (Hancock)
5	Dry Branch (Geist Reservoir)
6	Fall Creek-Indian Lake/Lawrence Creek
7	Indian Creek-Steele Ditch
8	Sugar Creek-Boyd Ditch
9	Buck Creek-Parker Estes Ditch
10	Grassy Creek (Marion)
11	Buck Creek-Breier/Doe Creeks
12	Sugar Creek-Smith Johnson Ditch
13	Little Sugar Creek-Thompson Ditch
14	West Little Sugar Creek-Buck Creek

Data Sources:
 1. US Census Bureau TIGER files, 2009
 2. USGS HUC 14 Boundaries, 2004
 3. Hancock County GIS
 4. National Wetlands Inventory, updated by Ducks Unlimited, 2009

Christopher B. Burke Engineering, Ltd.
 National City Center, Suite 1368 South
 115 West Washington Street
 Indianapolis, Indiana 46204
 (t) 317.266.8000 (f) 317.632.3306

PROJECT:	HANCOCK COUNTY SWQMP PARTS B AND C	PROJECT NO. 03-0463	APPROX. SCALE n.t.s.
	TITLE: RECEIVING WATERS, HUC 14 BOUNDARIES, AND WETLANDS	DATE: 10/2010	
			EXHIBIT 2